

“PEREGRINE”



NAME: Peregrine

HULL: Pontoon

LENGTH: 65ft

PASSENGERS: Max Pax 16

CREW: 3 crew comprising of Captain, deck-hand and cook

HULL: Pontoon

LENGTH: 65ft

ENGINES: two 60hp Volvo Penta diesel engines

CRUISING SPEED: 6 knots

POWER SUPPLY: Totally solar power supply with 220v system for deep freezes and 12v for lights. Back-up generator for emergency use only.

NO. OF PASSENGERS: 12 for comfort, but max pax is 16

CREW: Captain Tawanda, Cook Regie and Deckhand

GENERAL DESCRIPTION: Peregrine is a perfectly designed boat for families. It comprises of 6 double or twin cabins downstairs, which all look out on to the water and have fans 24/7 and mosquito nets. There are 2 separate bathrooms with showers and toilets. Upstairs on the top deck, there is enough sleeping space for up to 8 pax on bunks.

This well-designed pontoon is cleverly laid out with the fully equipped galley at the back of the lower deck. At the rear of the same deck is the Splash pool with filter system. **Please bring your own swimming towels.**

The top deck is spacious, with a dining area and beautifully hand-made wooden bar, with the added bonus of a Boma fireplace and weber braai.

The crew have their own cabin and ablutions.

EXTRA FACILITIES: The charter hire includes toilet rolls, cleaning materials and dustbin bags. There is a basic first aid box on board, but if you require specific medical items, please bring these with you. The boat has a large safe for your valuables and there is unlimited safe drinking water which has been filtered.

TOILETRIES: Are **NOT** supplied, so clients to bring their own. Bath soap will only be supplied in the case of client forgetting theirs.

TENDER BOATS: One x pontoon tender with 4 stroke 30hp Suzuki, and a Sportster with 115hp Yamaha.

COLD SPACE: Adequate cold space with 3 deep freezers and fridge. Also, an ice machine, so you will not run out of drinking ice. **PLEASE ONLY USE THE ICE MAKING MACHINE FOR DRINKING ICE, AND NOT FOR TENDER BOAT COOLER BOXES.**

ADDITIONAL INFORMATION: Fuel is **NOT** included in the charter price. Main boat, tender boats and generator will be full on arrival and Clients are to check this with the Captain prior to departure. The Company will not be held responsible for any discrepancies. On completion of the Charter, the main boat, tender boats and generator will refuel at Marineland and then disembark at Cutty Sark. Payment for refuelling must be paid by the Client direct to Marineland.

*Major refurbishment was done during lock down period.

MOORING: Cutty Sark Harbour

REGISTRATION NUMBER: KF 1119

BOARDING: 12 Noon

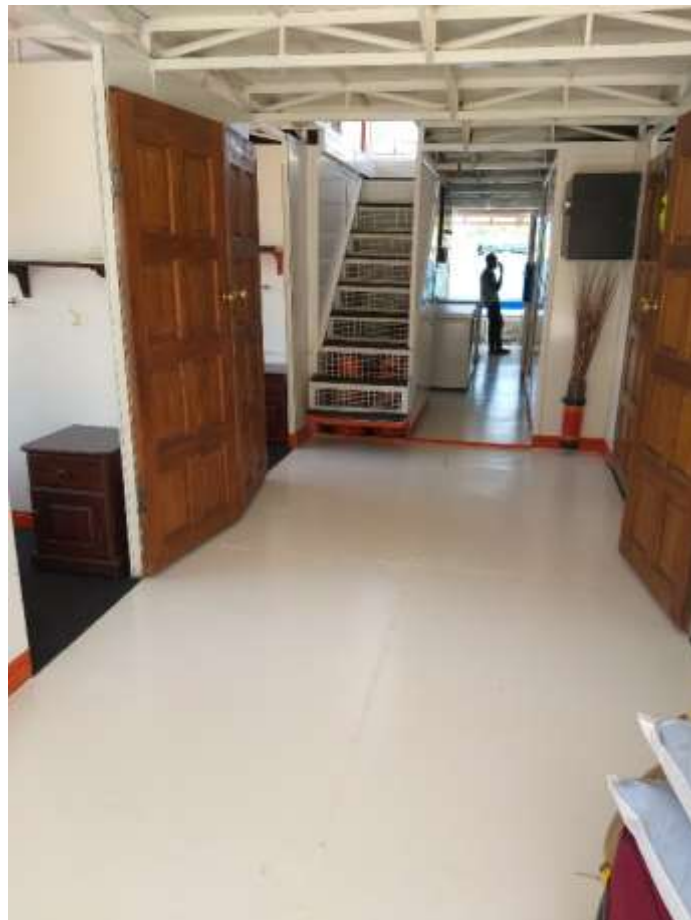
DISSEMBARKING: 10:30A.M

***Please note that whilst every effort has been made to ensure the details supplied above are correct, we cannot be held responsible in any way should an item mentioned above not be on board /broken or miss quoted.*





Drinks cooler fridge & ice maker



REVIEWS

29 DEC 2020 – 2 JAN 2021

LISA BALFOUR

We have just been on Peregrine over new year and I just wanted to say a few things.

We absolutely love this boat, and love all the little extra additions we noticed this time. The bar is great and the bar fridge is amazing. Love the new serving counter top upstairs and love the new beds too. But most importantly we LOVE your staff. We've been with Tawanda before and I honestly think he is one of a kind. Such a gentleman. We've also had Reginald before and he is an amazing chef. He tries so hard and his attention to detail is great. Philadelphia was incredible, he worked SO hard the whole time and so did Israel although we didnt have too much to do with him. All four guys are so polite and willing and always with a big smile on their faces.

